

KINGSTON

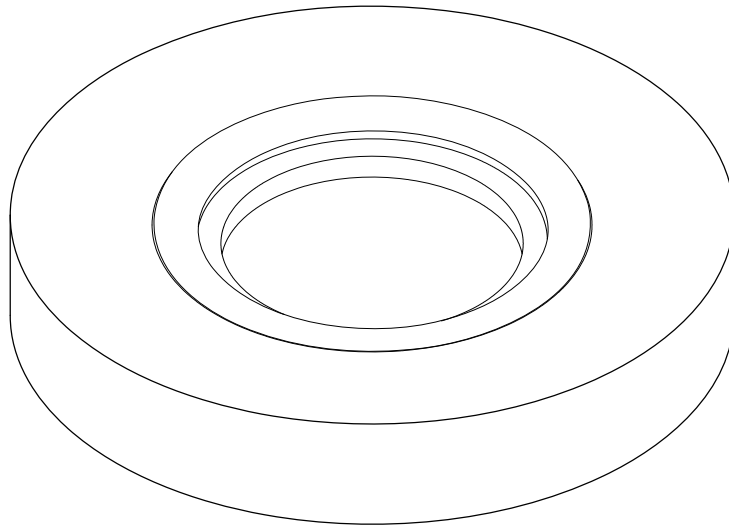
KITCHEN & BATH

INSTALLATION INSTRUCTIONS

Mounting Ring

Installation Instructions:

1. Add a small bead of silicon based caulking to the underside of the mounting ring.
2. Place mounting ring over the drain opening of the countertop.
3. Place vessel sink on top of the mounting ring.
4. Insert the lavatory drain and secure from the bottom.
5. Clean any excess caulking.



www.kingstonbrass.com

TOLL-FREE CUSTOMER SERVICE: 1-877-2-KBRASS

TECHNICAL SUPPORT E-mail: service@kingstonbrass.com

12775 Reservoir Street, Chino, CA 91710